

Autodesk BIM 360 Glue

What's new

All together

Autodesk BIM 360 Glue cloud-based service unites your teams.

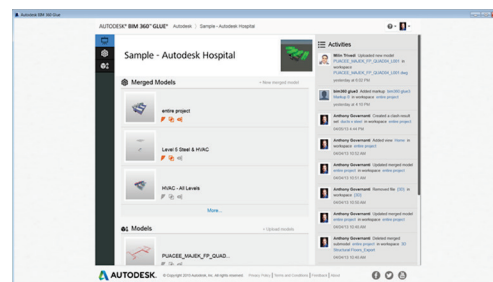
With Autodesk BIM 360 Glue, everyone on the extended project team can access the latest project models to collaborate virtually anywhere. BIM 360 Glue cloud-based collaboration software delivers:

- Multidiscipline model management
- Faster access to models for the entire project team
- Better coordination and collaboration in the cloud
- Real-time clash detection
- Mobile access to project models
- Integrated review, markup, and communication
- Integrated BIM workflows with Autodesk® Revit® software products, Autodesk® AutoCAD® software, and Autodesk Navisworks Manage software

Autodesk® BIM 360™ Glue® is a cloud-based solution that facilitates multidiscipline model coordination and clash detection and provides all stakeholders with virtually anywhere, anytime access to project models and data. The latest version advances cloud-based Building Information Modeling (BIM) management, helping you to more easily coordinate projects and collaborate. User interface improvements help users new to BIM participate in your project workflows and help you work more intuitively across key tasks. With one-click access to BIM and improved model viewing and availability, BIM 360 Glue extends the advantages of BIM to all your projects regardless of location, size, or complexity.

➤ New, completely redesigned user interface

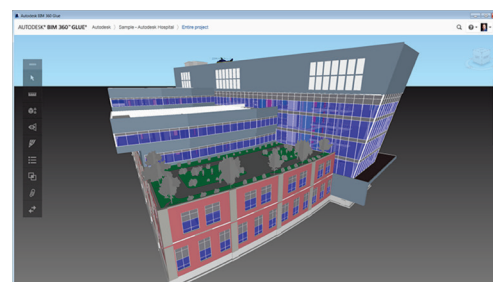
Take advantage of a more easy-to-use, easy-to-learn interface. The new interface gets you—and your extended project team members—started faster. More integrated and intuitive commands and toolbars help accelerate key tasks, such as setting up projects and navigating models. Stay on top of project progress at a glance with new Project Pages. From each Project Page, you gain better visibility into the latest project activities, such as recent updates to models, clash detection results, views, and markups.



New project homepage

➤ Fast access to larger, more complex project models

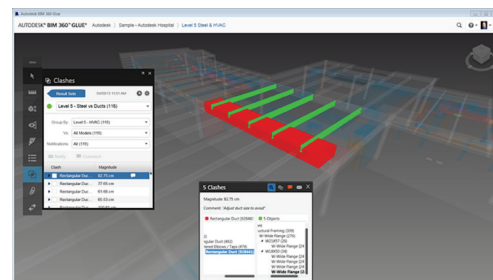
You can quickly access large, complex project models and extend the benefits of BIM 360 Glue to all your projects. Familiar Autodesk viewing controls and the configurable user interface make it easier to work with large, multidiscipline models. Drag multiple modules off the toolbar and position them to optimize viewing. With two monitors, use one exclusively for viewing models and use the second to control the modules. Manage models from individual disciplines and create multidiscipline merged models to help accelerate your coordination and review workflows.



Access large, complex multidiscipline models

➤ Simplified, collaborative, continuous coordination

Enhanced coordination and collaboration help you and your team stay ahead of issues that could delay or derail projects. It's now easy for all team members to perform clash detection, empowering you and your team to address issues more quickly and clearly. Zoom to explore individual clashes, toggle through clashes, filter results by discipline, and use the automatic clash grouping to support more streamlined coordination workflows. The 2D view also updates dynamically to help show you the clashes in plan view. Visual cues track versions of models, prompting you and your team to check for new clashes and identify issues for resolution. The new notification features allow you to alert individual team members to clashes that need their attention, helping to streamline the clash resolution process.



Enhanced clash interface

Learn more

For more information about Autodesk BIM 360 Glue, visit www.autodesk.com/bim360glue.

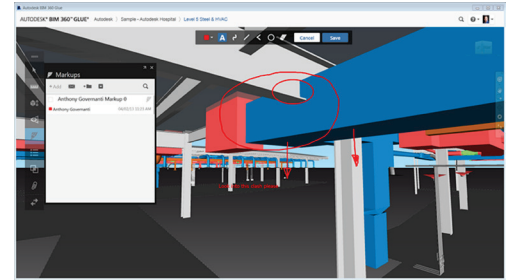
Get started now

Begin your 30-day free* trial of Autodesk BIM 360 Glue today. Sign up by visiting www.autodesk.com/bim360gluetrial.

*Free service trials are subject to the terms of service associated with that web service.

➤ Improved markup and measurement tools

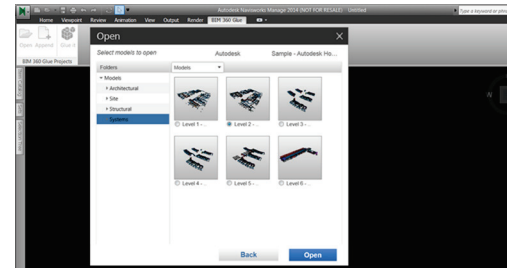
Communicate your observations more clearly and quickly with improved markup tools. Add shapes, lines, and text to any model view and notify project members. All markup tools are more accessible thanks to the new markup toolbar and more intuitive user interface, supporting improved communication across the project team. Verify model dimensions and clearances with new and improved measurement tools.



New markup tools

➤ Advanced BIM workflow interoperability with Autodesk Navisworks Manage 2014 software

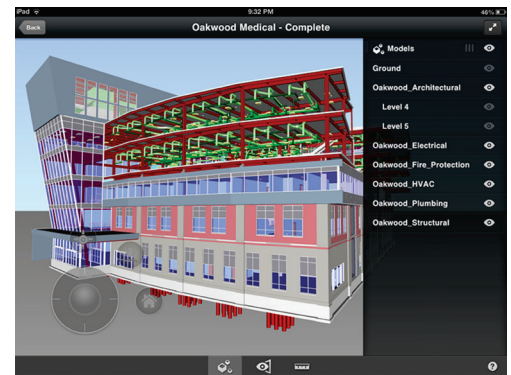
Move more seamlessly between Autodesk® Navisworks® Manage software and BIM 360 Glue. Continue to publish models created with Navisworks Manage to BIM 360 Glue for easy sharing across the project team. You can now open BIM 360 Glue models directly from Navisworks Manage 2014 software, enabling better access to advanced analysis such as Quantification and Timeliner.



Integration with Navisworks software products

➤ Improved mobile access

Autodesk BIM 360 Glue mobile app for Apple® iPad® mobile devices delivers improved access to project information on iPads, supporting field workflows. More powerful rendering capabilities provide higher-quality visualizations—virtually anywhere, anytime. Swipe to hide, isolate, and reveal objects. Explore specific trades within multidiscipline models just as easily in the field or on the go. Measurement and magnifying tools enable you to delve deeper to help you understand details, sizes, and distances.



Improved mobile display