

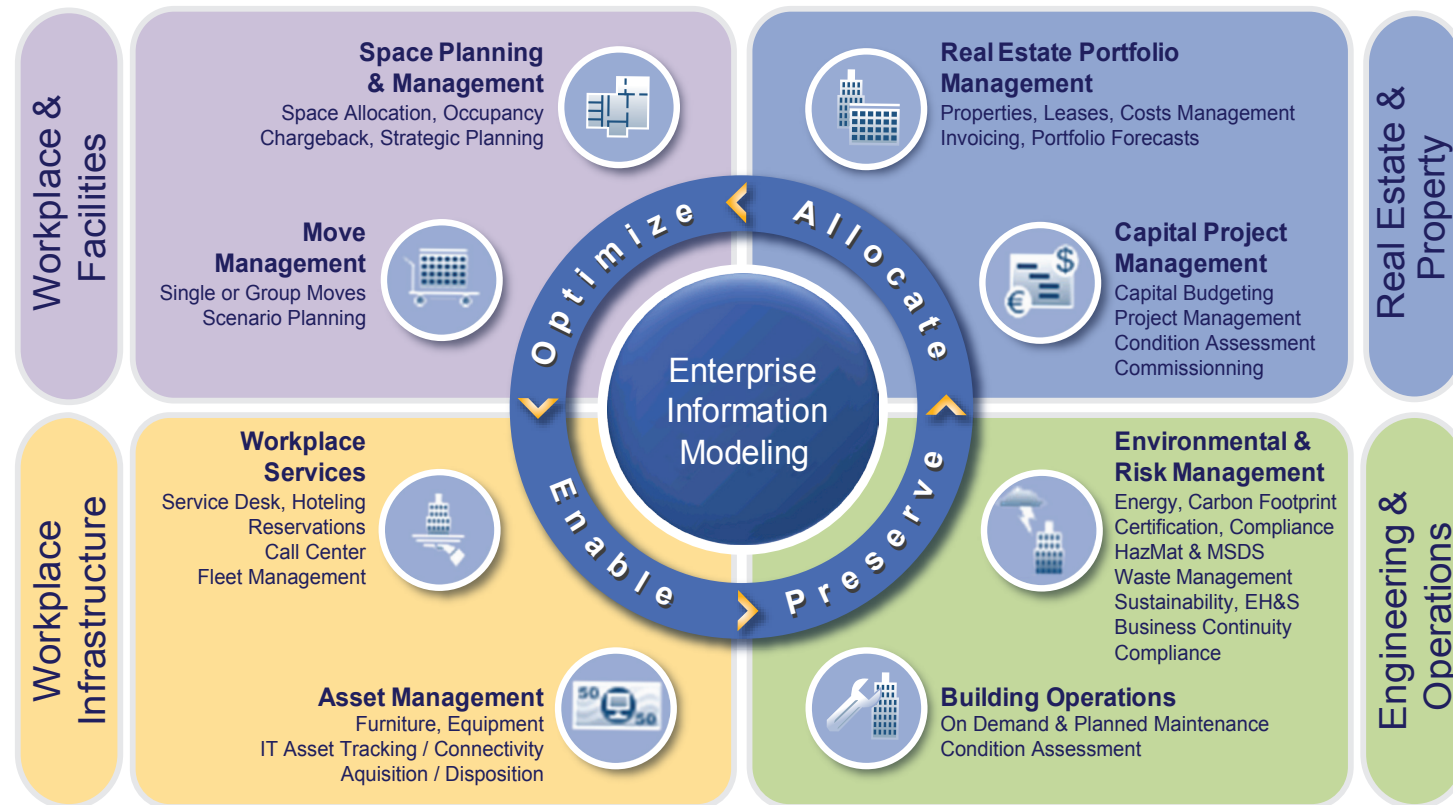
## Comprehensive and Integrated—7,000,000 Users Prove it Daily

### About ARCHIBUS, Inc.

ARCHIBUS is the #1 global provider of real estate, infrastructure, and facilities management solutions with the total annual expenditures for ARCHIBUS-related products and services valued at over \$2.3 Billion (USD).

With ARCHIBUS, organizations can use a single, comprehensive, integrated solution to make informed strategic decisions that optimize return-on-investment, lower asset lifecycle costs, and increase enterprise-wide productivity and profitability.

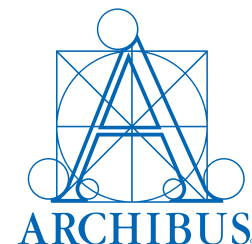
More than 7,000,000 ARCHIBUS users manage over 18 million buildings and properties, with organizations reporting facilities-related cost savings as high as 34%. With over 1,700 ARCHIBUS Business Partners, local and regional support worldwide is available in over 190 countries and more than 30 languages.



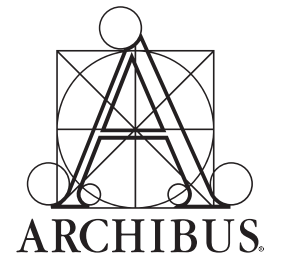
### Some of the healthcare organizations that benefit from ARCHIBUS:

Alegent Health Systems	Health Sciences Centre-Winnipeg (CA)	Portsmouth Hospital NHS Trust (UK)
Atlantic Health Systems	Indiana University Health	Serco Health Services (UK)
Bermuda Hospitals Board	Johns Hopkins Hospital	Staten Island University Hospital
Capital Health Authority (CA)	Kaiser Permanente	St. John's Hospital
Calgary Health Region (CA)	Massachusetts General Hospital	SJHC/LHSC
Cedars-Sinai Medical Center	MD Anderson Cancer Center	University of Nebraska Medical Center
Children's Hospital of Boston	Memorial Sloan-Kettering Cancer Center	University of Tennessee Medical Center
Children's Hospital of Philadelphia	Mount Sinai School of Medicine	UTMB Health
Duke University Medical Center	New York Presbyterian Hospital	Vancouver Coastal Health (CA)
Geisinger Health System	Norfolk and Waveney Mental Health	Wake Forest University Baptist Medical Center
Great Ormond Street Hospital for Children NHS Trust (UK)	Foundations Trust (UK)	West Hertfordshire Hospitals NHS Trust (UK)
	Partners HealthCare	<b>and many more...</b>

For more information about how your healthcare organization can benefit from implementing ARCHIBUS, visit [www.archibus.com](http://www.archibus.com)



# ARCHIBUS for Healthcare Organizations



- Space and Inventory Management
- Reimbursements / Indirect Cost Recovery
- TJC / EOC Compliance
- Operations & Maintenance
- Service Level Agreements
- Emergency Preparedness
- Facility Condition Assessment / Statement of Condition
- Capital Budgeting
- Project Management
- Asset Management
- Operational KPIs & Metrics
- Lease & Property Administration
- Environment + Sustainability
- Compliance
- Grant Reporting

The #1 Solution for Real Estate, Infrastructure, and Facilities Management in the World  
 Over 7 million users prove it daily—saving their organizations over \$100 billion annually

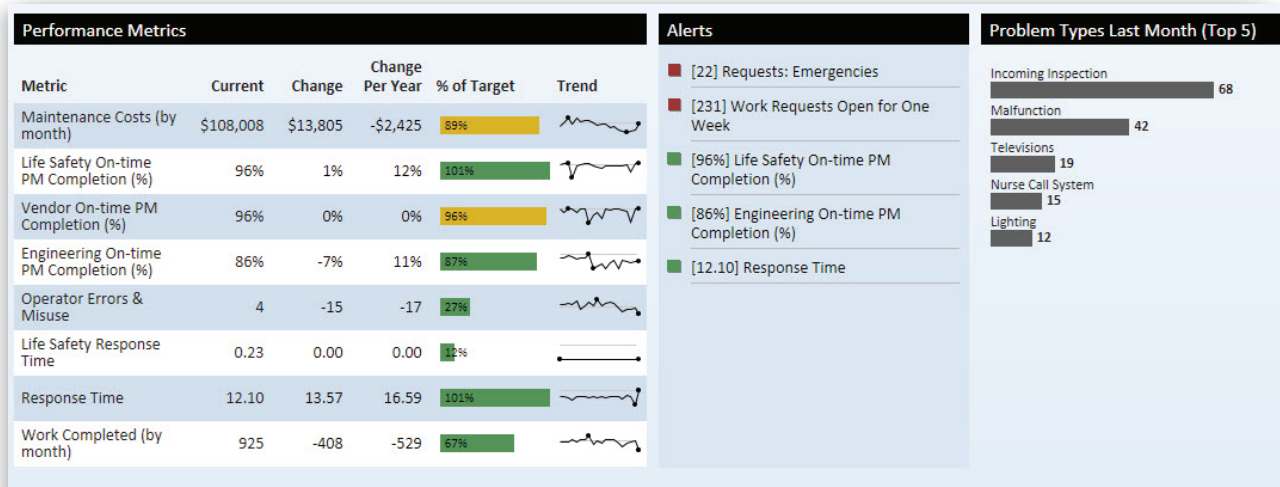
# ARCHIBUS

## for Healthcare Organizations

Maintaining safe, functional, and compliant facilities and related infrastructure while minimizing operating costs and maximizing potential reimbursement, can be a difficult balancing act for healthcare organizations. Given this challenge, it is crucial to effectively track, analyze, and report facilities-related information to mitigate risk and reduce costs. Everyday, healthcare organizations like yours efficiently improve delivery of patient care by using the sector's leading integrated real estate, facilities, and infrastructure management solution – ARCHIBUS.

### Benefits

- Provides comprehensive data collection, tracking, and reporting capabilities to comply with regulatory requirements, such as The Joint Commission (TJC)
- Maximizes reimbursements from third-party payers through accurate, defensible space utilization data
- Increases uptime of facilities and biomedical related equipment through improved maintenance practices
- Streamlines the work order process to improve productivity and customer satisfaction
- Reduces costs by consolidating functionality into a single, integrated IT system



Align activities with organizational strategy through balanced scorecards based on 193 metrics installed in ARCHIBUS

### Typical Activities and Reports include:

#### Operations and Maintenance

- Open Work Request Status
- Corrective Work Orders Waiting on Parts
- Service Level Agreements
- Parts Usage History & Materials to Order
- Planning Board for Labor Resources
- 12-Month PM Work Schedule
- PM Completion Rates by Trade
- Rooms with Active Work Orders
- Daily Overdue Service Requests
- Maintenance Back Log Report

#### Reimbursements - Grant Reporting

- Work Orders Scheduled vs. Completed
- Environmental Health + Safety Compliance
- Medicare/Medicaid Space Reimbursement
- Financial Statement for Chargeback
- Actual Costs vs. Budgets for Departments
- Clinical Space & Rooms by Building
- Highlight Rooms by Department
- Synchronize Room Percentages
- Historical Space Usage by Department

#### Asset Management

- Equipment Standards and Inventory
- Depreciation Schedules
- Equipment Disposition History
- Asset Failures by Time Period

#### Capital Budgeting

- Approved Projects by Funding Year
- Available Capital and Expense Funds
- Budget by Program

### Satisfy Regulatory Requirements

- Collect and report on data pertinent to life safety and environmental requirements (such as those needed for TJC, HIPAA, NFPA, EPA, and OSHA)
- Prepare for audits with confidence, knowing your Preventive Maintenance and other Environment of Care data is accurate and easily accessible
- Maintain compliance history and Plan for Improvement item tracking for prior citations
- Establish continuous process improvement without relying on costly external consultants

### Maximize Reimbursement Revenues

- Submit accurate, defensible data and easily perform chargebacks to ensure maximum funds for grants and other sponsored activity
- Report space usage figures quickly to enable faster turnaround times for receiving reimbursements
- Track and allocate operational costs to departments and cost centers

### Optimize Asset Deployment

- Analyze the value and performance of your assets to better prioritize capital spending
- Manage the life-cycle of physical assets such as buildings, cabling, equipment, and the ongoing expense of parts and supplies

### Improve Equipment Uptime

- Increase uptime of biomedical and facilities-related equipment by shortening response time for corrective work orders
- Minimize the risk of failure for critical equipment by detailing required preventive maintenance steps and reporting their completion
- Analyze the frequency of corrective maintenance to identify potential problems before they occur

### Streamline Operations and Maintenance

- Standardize and automate the work request and work order process through easy-to-use Web forms
- Track asset condition to identify critical deficiencies and integrate with Capital Budgeting and Project Management activities
- Achieve higher customer satisfaction through reports that highlight outstanding work orders and craftsman availability
- Reduce unnecessary labor usage and costs by project, building, department, or equipment

### Leverage Mobile Apps for Greater Efficiency

- Lower the overall cost of providing a two-way exchange of information to and from a centralized repository
- Give immediate access to graphical and nongraphical reports, forms, and views—anytime, anywhere—with a Wi-Fi, Internet, or cellular network connection
- Ensure work continuity and higher productivity
- Streamline condition assessment surveys in support of Environment of Care and/or Statement of Condition status reporting

### Reach Quality/Performance Goals with KPIs, Trend and Other Metrics

- ARCHIBUS Performance Metrics Framework application delivers performance data about your real estate, infrastructure and facilities operations and their finances
- Obtain a balanced-scorecard view of portfolio health and align it with organizational strategy
- Gain a comprehensive and completed overview of facility processes with drill-downs
- Manage leased and owned space more cost-effectively with intelligent analytics
- Lower operational costs and improve return on net assets and cash flow with facility performance metrics

