

ARCHIBUS® Extensions & Frameworks

SMART CLIENT EXTENSION FOR REVIT®

Integrate facilities and infrastructure data with BIM models over the Web for comprehensive building lifecycle management and reporting

Activities and Reports include:

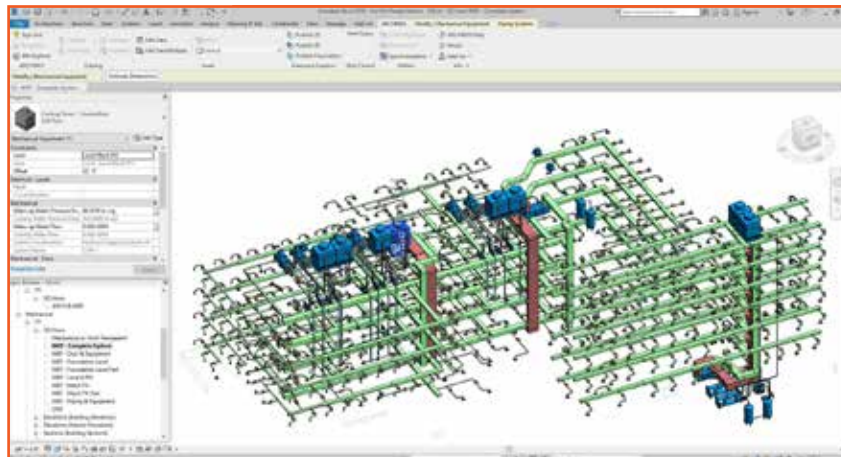
- One-click connection of an entire Revit model to enterprise data
- Automatic, bi-directional updates of enterprise and model data
- Configurable rules to match your BIM Execution Plan
- Automatic updates of areas when the Revit model changes
- Simultaneous updates of asset locations when inserted within Revit
- Access to Revit Architecture and Revit MEP data and graphics from anywhere over the Web, in seconds

Plus Many More...

Building Information Modeling (BIM) has enabled a richly detailed and collaborative approach to the way buildings are designed and constructed. What it lacks, however, is a way to easily scale to the portfolio-level and connect with business data. ARCHIBUS Smart Client Extension for Revit addresses that need with a true BIM 4.0 application designed from a facility manager's perspective. It provides quick access to Revit graphics and COBie information using Web Services to connect Revit models to ARCHIBUS enterprise data. This gives users a full lifecycle view of an organization and its processes. In addition, the Smart Client Extension implements rules and workflows that coordinate the bi-directional data exchange and updates the BIM model itself, to keep everything in-synch.

BENEFITS

- Provides an intuitive, graphical bi-directional link to Revit using Web Services, enabling an easy, incremental approach in transitioning to BIM technology
- Supports all facility management elements in BIM models
- Puts BIM data to work immediately for building operations-related processes
- Connects seamlessly to ARCHIBUS applications for increased productivity and data accuracy



Use the bi-directional synch feature to incorporate database-driven business information, such as space allocation by department, from ARCHIBUS within your Revit model

For more information, visit www.archibus.com/scr



Fast ROI, Easy Transition to BIM 4.0

The ARCHIBUS Smart Client Extension for Revit overcomes the limitations and complexity of using Revit alone by integrating Revit directly into a larger BIM 4.0 project model. The Extension is a small plugin that loads into Revit in seconds. It connects a Revit model immediately to the ARCHIBUS enterprise database – wherever it is – using Web Services. This quick implementation delivers rapid ROI as managers can easily access and integrate facilities information and processes with their Revit data and graphical objects. Users gain a more accurate picture of their organization to help improve their asset management posture.

- Synchronize COBie information automatically between design and facility management activities, in real-time, without human intervention or extract files
- Leverage Revit conventions with, easy-to-use features that validate data to speed work and reduce errors
- Combine graphics and data seamlessly from both AutoCAD or Revit in queries so that CAD, BIM, or both tools can be used, depending on building or function
- Centralize data and mapping rules easily to enforce the terms of a BIM Execution Plan
- Utilize productivity tools, such as a spreadsheet-style interface that lets users review and update data from numerous models in one view
- Employ the ARCHIBUS additions to the Revit ribbon tab menu with commands that use Web Services to bi-directionally link the Revit model with the ARCHIBUS enterprise database
- Implement management capabilities, function-by-function (starting with ARCHIBUS space-related applications) and adding others, as needed

Integrate All Space Management Functions with BIM

The Smart Client Extension for Revit allows users to take advantage of purpose-built facilities management tools to deliver the results needed to support the organizational mission. With one click, users can connect an entire Revit model to their space management data and manage BIM spaces immediately.

- Support all facility management elements in BIM models – rooms, areas, furniture, equipment, network devices, life safety and more.
- Use the Revit rooms or areas as the locations for vacancy analysis, allocation planning, occupancy, moves, and more
- Meet accuracy and audit requirements for chargebacks of all types using established chargeback rules and automatic audit trails

Link Building Lifecycle Management to Strategy

To create direct connections to building operations-related workflows, the Smart Client Extension for Revit can put BIM data to work immediately to document and support a range of vital operational needs. Again, one click is all it takes to integrate data in the ARCHIBUS repository with the BIM model.

- Connect an entire Revit model to equipment maintenance and preventive maintenance functions
- Ensure that all new equipment is completely cataloged in inventory for real-time accuracy
- Use graphics from Revit for finding service locations, even via mobile devices such as tablets, using Web connectivity
- Streamline the building commissioning process by connecting plans and checklists (such as condition assessments) directly to the BIM model

One Click Links BIM to ARCHIBUS Applications

To easily manage a potentially huge repository of BIM data, the Smart Client Extension for Revit links easily to many of the most popular ARCHIBUS applications. By implementing the Smart Client Extension, one can use the data and results from Revit without delay, translation or re-entry, in any of those applications. For example, users can achieve immediate results with:

- Space Inventory & Performance: to provide a unified inventory, with consistent space accounting standards across buildings and lines of business, key performance indicators, and an accurate view of occupancy
- Personnel & Occupancy: to track vacancies, perform occupancy planning, track trends and efficiency
- Move Management: to manage both individual and group moves using a systematic workflow
- Hoteling: to improve overall occupancy rates by sharing workspaces for those who telecommute
- On Demand Work: for performing reactive maintenance on equipment within the BIM model
- Preventive Maintenance: for completing scheduled maintenance and ensuring that all the equipment within the facility does not prematurely degrade