

CUSTOMER SUCCESS STORY

Alban Engineering Supports Business Growth with Revit and Consulting Services from IMAGINiT



Alban Engineering is an MEP engineering firm in Hunt Valley, Maryland. The company uses a collaborative team approach to system design and is committed to becoming the leader for MEP design solutions in the education and public building sectors.

The Objective: Grow a Young Firm, Efficiently, with Revit

As a growing firm, Alban Engineering strives to work efficiently, deliver a high quality product, and promote a culture where employees are engaged in their work. The management team recognizes that technology plays a large part in making this vision a reality. During the firm's early days, President Jeff Alban decided that implementing Revit should be one of the company's first major investments. "Architects were pushing us to work in Revit. We concluded that we wanted to adopt Revit as our platform and to use it as efficiently as possible," said Alban.

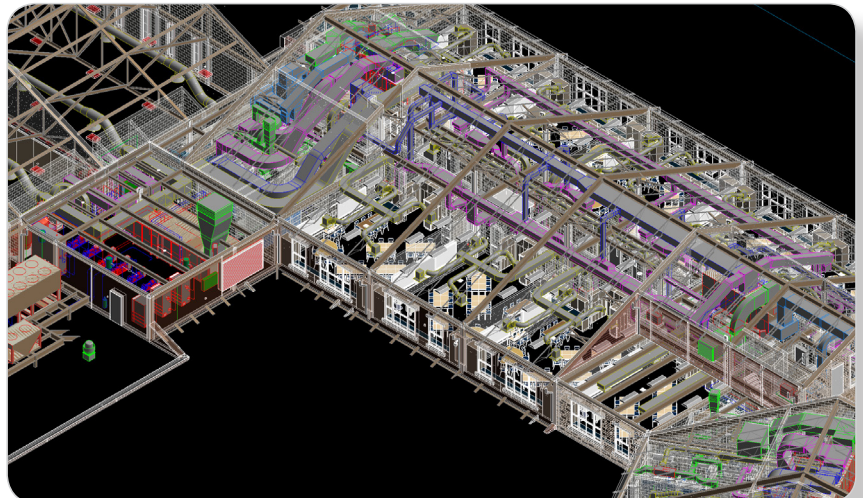
Before founding Alban Engineering, Jeff Alban and mechanical design engineer, Parvaneh Famili, worked at a firm that partnered with IMAGINiT Technologies. Alban Engineering contacted IMAGINiT to discuss its Revit implementation. In addition to the software setup, the team also needed assistance with standards, project templates, and workflows. "We have a particular type of presentation that we want on drawings. Revit standards help make that happen," said Alban.

After Alban Engineering accepted IMAGINiT's proposal, a two-person team worked on the Revit implementation and employee training. "As a small firm, everyone has to be hands on and understand how to use Revit. The training class was important. All employees now know how to carry a project from the architectural plans all the way through to the finished product," said Famili.

Alban Engineering takes pride in hiring employees who fit the company's close-knit, family-like culture. The IMAGINiT team fits well with the firm's philosophy and is always available to answer questions. "The software and training investment was important because we don't want employees to struggle with their work. We want the work environment to be enjoyable for people," said Alban.

"It's easier to design. We can make changes in real time, and everyone can see and react to them."

Parvaneh Famili
Mechanical Design Engineer
Alban Engineering

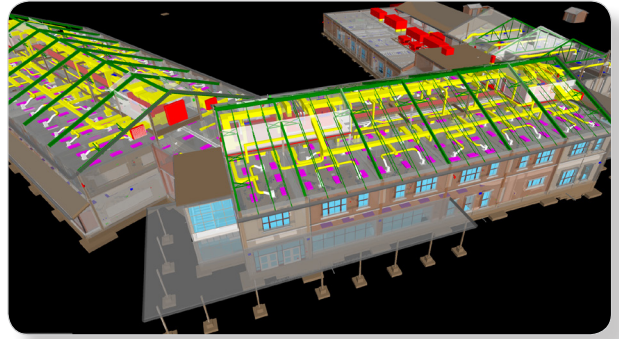


The Results: Higher Efficiency and Better Collaboration

Alban Engineering is pleased with its Revit platform. Tasks that could have taken hours can be done in minutes. “When we did hand drafting or used AutoCAD, we had to picture buildings in three dimensions which is a skill not everyone has,” said Alban. “To aid with clash detection, I would show beams in one color in drawings and pipes in another. It was time consuming, especially on a building with multiple floors and many part plans, for example.”

As Famili noted, with Revit the Alban Engineering team knows that clash detection occurs automatically all day long. “We sleep better knowing that’s happening,” she said. The team uses Revit models in its bi-weekly meetings with architects. There is better coordination as everyone looks at the same model, does virtual walkthroughs, slices the building into sections, or zooms in on problem areas. The benefits over a 2D drawing are immense. “It’s easier to design. We can make changes in real time, and everyone can see and react to them,” commented Famili.

The company is also pleased with the quality of the documents generated from Revit. This hasn’t gone unnoticed by clients. “Our partners see the quality of our deliverables and they often ask us which vendor we work with on Revit. We refer them to IMAGINiT,” said Famili.



Setting the Stage for Continued Growth

Looking ahead, Alban Engineering is poised for continued growth. The team currently has 11 members and two new employees will soon be joining. The IMAGINiT team continues to provide technical support to Alban Engineering. About every six months, IMAGINiT comes in for a half-day question and answer session. “The IMAGINiT team has always responded to our needs and we appreciate that, since we are a service-oriented company. We want our employees to know the IMAGINiT resources and feel comfortable contacting them whenever they need help with Revit,” said Alban.

About IMAGINiT Technologies

IMAGINiT Technologies, a Rand Worldwide Company, is the world’s largest provider of enterprise solutions to the engineering community, including the building, manufacturing, civil and mapping industries. With over 25 years of experience, and 45 offices throughout North America, we provide the expertise, training and support to help companies realize the full power of design technology, maximize ROI and gain competitive advantage.

IMAGINiT is a leading provider of Autodesk software solutions and the largest North American Autodesk Authorized Training Center (ATC) partner. All of our locations are supported by a vast pool of engineering resources focused on developing real-life business solutions for their local clients.



Specialization

Building
Civil Infrastructure
Product Design & Manufacturing
Government
Education

Value Added Services

Consulting Specialized
Product Support Specialized
Authorized Training Center



info@rand.com



800.356.9050



www.imaginit.com