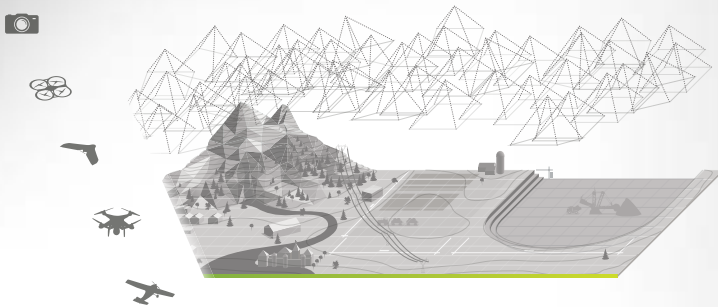


# ACCURACY + EFFICIENCY



**Pix4Dmapper is your complete mapping and modelling solution to convert thousands of images into geo-referenced 2D mosaics and 3D models.**



Need to measure volume extractions or stockpile volumes for the mining industry? Create NDVIs from multi-spectral sensors for the precision agriculture sector? Generate contour lines and manage environmental changes of natural resources? Produce precise and timely maps and models for construction, cultural heritage or archaeology sites?

*Pix4Dmapper* automatically processes terrestrial and aerial imagery acquired by light-weight UAV or aircraft using its innovative technology based purely on image content. And converts your images into highly accurate, precise, customizable and timely results for a wide range of GIS and CAD applications.



## **Innovation**

Stay always one step ahead with our latest innovations combining the best from Computer Vision and Photogrammetry



## **Accuracy**

Achieve survey-grade accurate and precise results from lightweight compact cameras to large photogrammetric sensors



## **Efficiency**

Use the fully automatic workflow and let the software handle all calibration and processing



## **Control**

Assess and improve the quality of your results with the sophisticated editing tools included



## **Integration**

Seamlessly import the generated results into any GIS, CAD or industry specific software package



## **Support**

Count on personal and cloud-based support from our customer-praised support team and keep on learning with our knowledge base and training programs

# CONVERT + DELIVER



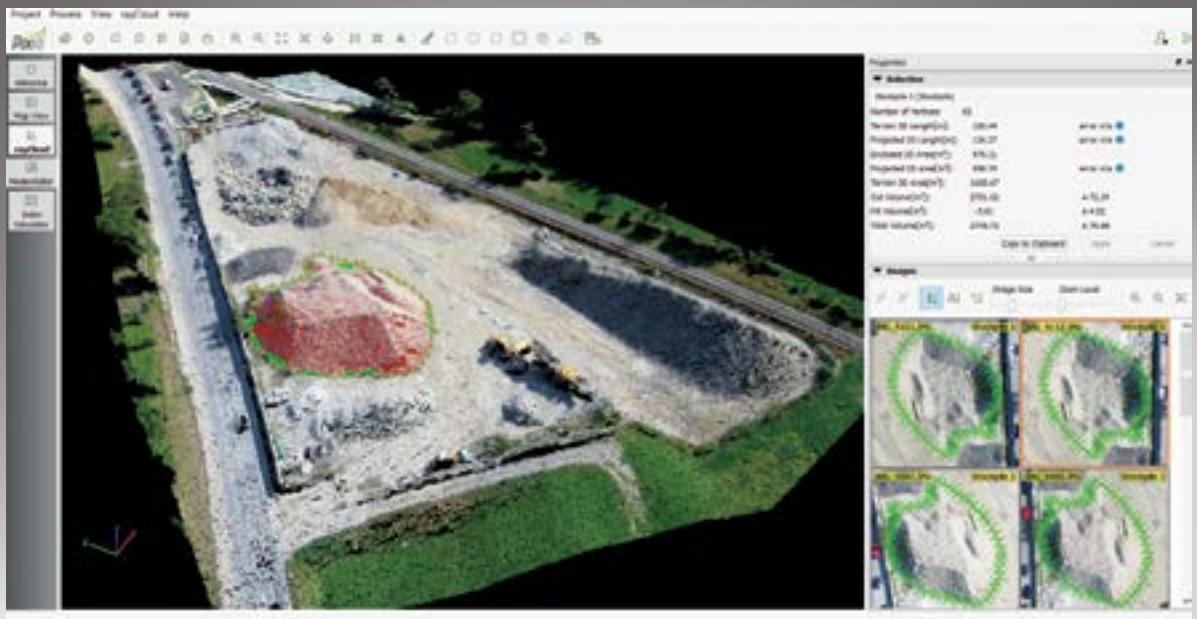
## Input + Process

Use any camera and lens, from any angle, and include geotags and GCPs for precise geo-referencing. Choose your processing options and assess the quality and completeness of your input images at all stages, even while still in the field. Processing is made easy with the fully automatic workflow.



## Assess + Edit

Keep full control of your projects with these integrated editing tools:



**The rayCloud editor** combines the 3D point cloud with the original images and is a ground-breaking concept that offers you a completely new viewing and annotating experience. Use the rayCloud editor to view, assess, interpret and improve the quality and accuracy of your results. And measure, vectorize, classify and perform GIS and CAD functionalities directly in the rayCloud editor.

**The Mosaic editor** is your answer to beautiful maps with a few clicks. Improve the quality of the automatically generated orthomosaic with the easiest seamline editing tool available in the market.

**The Index calculator** enables you to create and customize index maps, using your multi-spectral imagery with radiometric accuracy. Application maps can then be produced by integrating the results, such as NDVI, into all major AG management software packages.



## Output + Share

Choose from a variety of formats for your geo-referenced orthomosaics, DSMs, DTMs and point clouds, texturized 3D models and simplified CAD models. Customize index maps at any resolution, classify terrain and objects automatically, create objects and animations directly in the software. Then import generated results and vector objects seamlessly into a wide variety of GIS, CAD and traditional photogrammetry software packages, including industry specific software.