

Scanning Solutions



Leica RTC360

Why Use High Definition Surveying (HDS)?

You can reduce or eliminate costly return site visits by capturing millions of unique data points. With more accurate information that is geo-referenced, HDS provides the ability to create as-builts and topographic surveys without return site visits, freeing you to do more work, more effectively.

Using HDS you can collect data on a structure in its current condition without significantly disrupting the people who work there—providing savings in worker down-time. Today, architectural firms use scan data to create an as-built building information model (BIM) faster than starting with an older CAD file or even worse—a printed document. Having true representation of the building as it stands today, rather than relying on the final construction documents, is more valuable because it depicts changes that have occurred since the documents were originally drafted.

Why IMAGINiT?

We're the only organization providing HDS hardware that also understands how that data will be used downstream, not just in design, but all the way through to facility management and for creation of as-builts for retrofits and renovations. Check in with our experts and you'll see what makes us different.

What do we offer?

Hardware



Leica iCON

- **Leica Scanning Solutions**

We offer the Leica ScanStations, BLK360, and the RTC360. These tools provide the highest accuracy and offer both imaging and point cloud collection. With so many options, there is a Leica scanner that fits your budget and needs.

- **Leica iCON**

Reality capture can be a bit of a misnomer. You can also take your accurately created model and use those points on site for a wide range of measuring and positioning tasks.

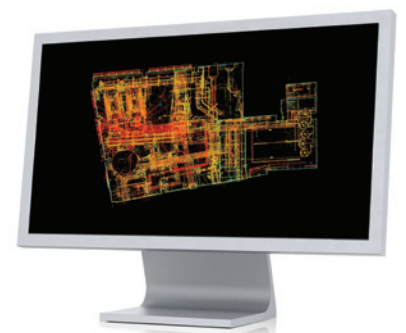
Software

- **Leica Cyclone**

Cyclone allows you to capture scan data in the field, register multiple scans together, accurately and algorithmically model pipes and structural steel, as well as create survey points, breaklines, and TINS surfaces. Using this tool, you can create simple animations and visualizations. Cyclone is the base platform for exporting the cloud data to any other format you may need.

- **Leica REGISTER 360**

Cyclone REGISTER 360 provides simple yet robust point cloud registration for users of any skill level. Deliver more accurate results, faster; visualize in more detail, and collaborate more effectively on point clouds.



Leica REGISTER 360

- **Leica CloudWorx for AutoCAD, Revit or Navisworks**

Work efficiently with large point clouds directly using AutoCAD, Revit or Navisworks tools and commands. CloudWorx adds simple tools for viewing and working with slices of point cloud data to speed up drawing and model creation.

- **Leica JetStream**

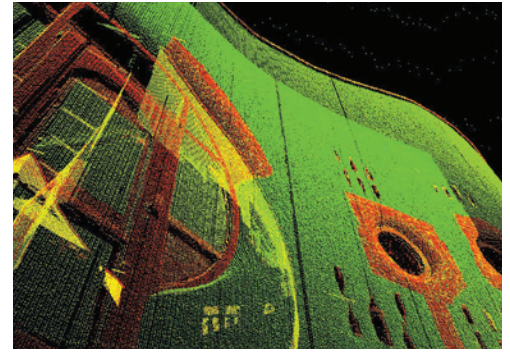
Integrate point cloud data into your CAD or BIM system workflows. Unlike other solutions, Leica JetStream provides real-time loading and rendering of all your points, all the time—regardless of project size.

- **Autodesk products**

As an Autodesk Platinum Partner, we can help you select the right CAD or BIM software for your project workflow. From AutoCAD to Revit, Civil 3D and the Industry Collections, we've got experts who understand not just how the software works, but how it needs to work for you.

- **Facility management solutions**

Beyond just understanding the survey and design side of the world, we also work with building owners who use the data created by civil engineers and architects for years at a time. Providing solutions that help manage space, work orders and assets, our facilities management team understands the importance of accurate data long-term.



Leica point cloud

Services

- **Customized Training**

Understand the tools that will make your workflow efficient, no matter how you need to use point cloud data.

- **Proof-of-Concept**

Not sure if scanning will benefit your projects? Test the waters with a proof-of-concept, which will also provide evidence on the potential return-on-investment for hardware purchase.

- **BLK360 and RTC360 SmartStart**

For these tools, getting up quickly can be simple with streamlined training and hands-on learning in the field.

- **Strategic Business Planning**

Get help for your team, whether it's project assistance or specification oversight, we can help.

About IMAGINiT Technologies

IMAGINiT Technologies, a Rand Worldwide Company, is the world's largest provider of enterprise solutions to the engineering community, including the building, manufacturing, civil and mapping industries. With over 25 years of experience, and over 40 offices throughout North America, we provide the expertise, training and support to help companies realize the full power of design technology, maximize ROI and gain competitive advantage.

IMAGINiT is a leading provider of Autodesk software solutions and the largest North American Autodesk Authorized Training Center (ATC) partner. All of our locations are supported by a vast pool of engineering resources focused on developing real-life business solutions for their local clients.

